



Lotus Sametime 7.5 Preview

FUTUREINSIGHT



Lotus software

Lotus Sametime 7.5 is a major upgrade in real-time collaboration

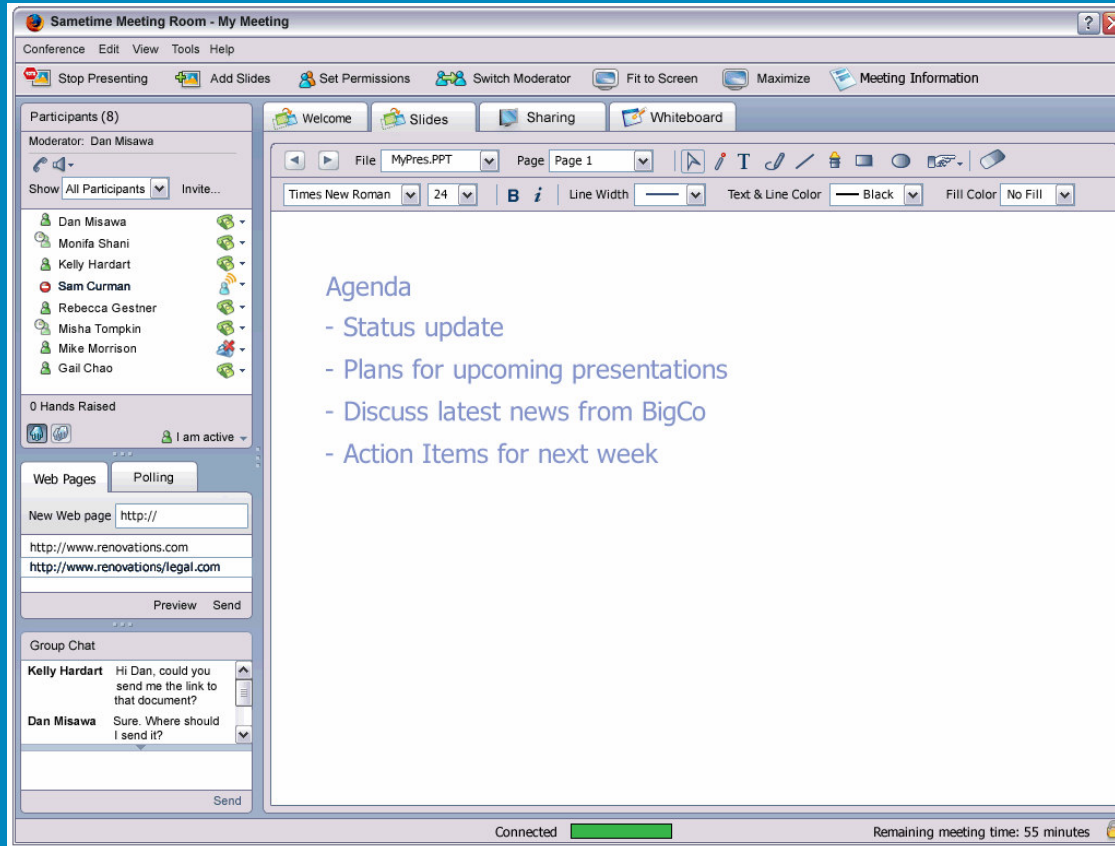
- ➔ ■ **Sametime 7.5 Web Conferencing Enhancements**
- **Sametime 7.5 Instant Messaging Enhancements**
- **Sametime 7.5 Real-Time Collaboration Gateway**

FUTUREINSIGHT



Lotus. software

Meeting Room Client Updated



FUTUREINSIGHT



Lotus software

Extendable Telephony Service

- Sametime 7.0 and N/D 7.0.1 – Audio integration with Web conferencing and click-to-call integration into the Connect Client and Lotus Notes
 - Avaya
 - *Other partner announcements at Lotusphere*
- Sametime 7.5 enables partners to expand on telephony integration
- Sametime 7.5 – Audio partners can opt to use the plug-in model for more extensive integration
 - Incoming call control
 - Soft-phone
 - *More capabilities*

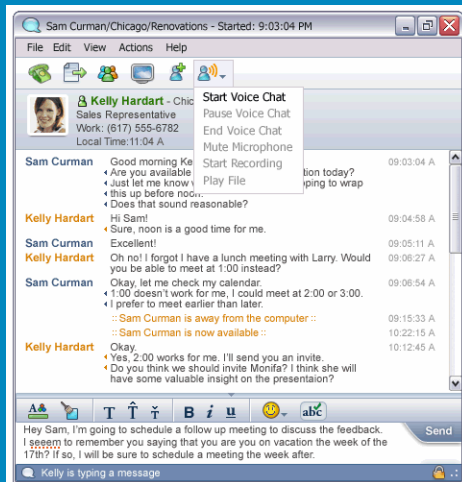
FUTUREINSIGHT



Lotus software

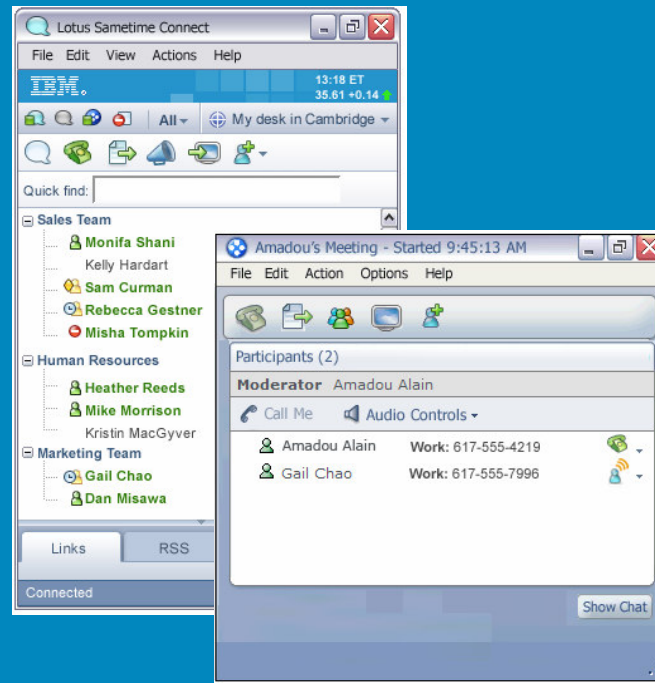
Audio Integration

Click-to-talk



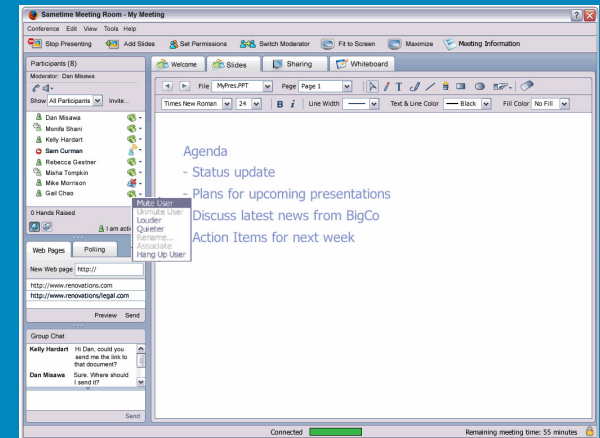
Users must be online and willing to talk through computer

Click-to-call



Users can be offline, but need some kind of phone. Telephony adaptor must be present on server and connect to a telephony provider.

Web Conf Integration



FUTUREINSIGHT

Lotus software

Lotus Sametime 7.5 is a major upgrade in real-time collaboration

- Sametime 7.5 Web Conferencing Enhancements
- ▪ Sametime 7.5 Instant Messaging Enhancements
- Sametime 7.5 Real-Time Collaboration Gateway

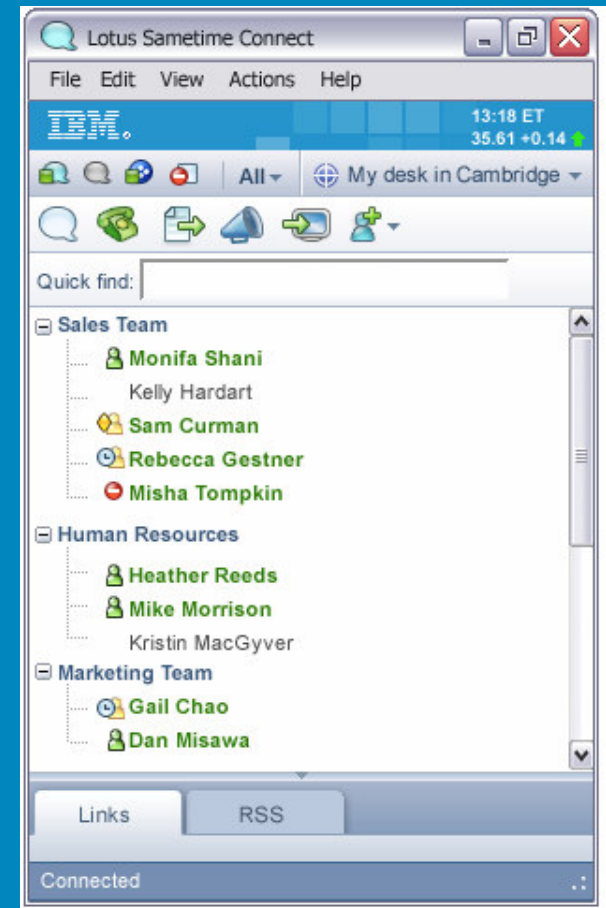
FUTUREINSIGHT



Lotus. software

Connect Client

- Redesigned Connect Client
- Unified IM client
 - IM client for both Sametime and Workplace Collaboration Services
 - Unifies Sametime Connect Client and Java Connect Client
- Built on Eclipse framework
- Extensible via plug-ins



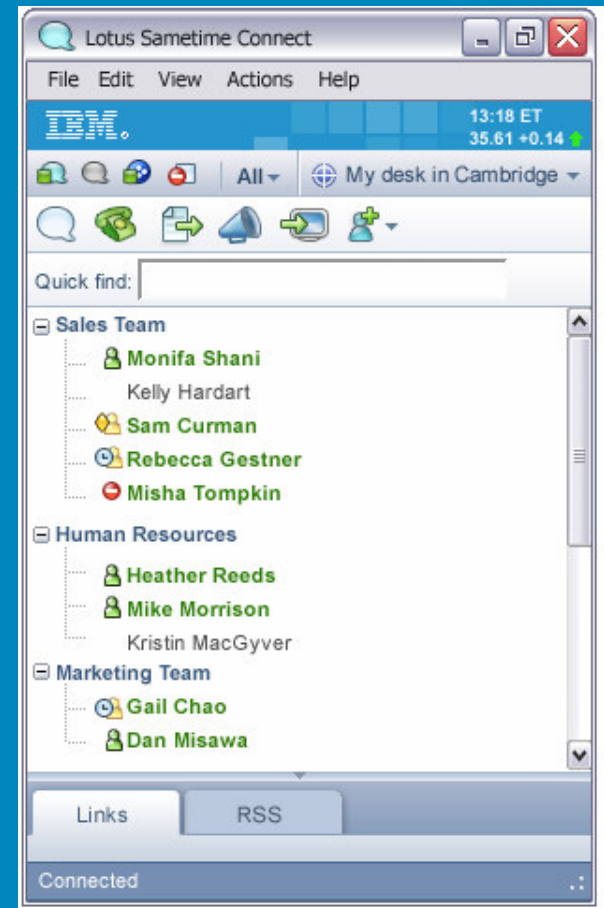
FUTUREINSIGHT



Lotus software

Connect Client Extensibility

- Launch your own application or tool from the client
- Embed mini-application in client
- Extend live names
- Add actions to the toolbars and menus
- Brand the client
- Replace the telephony integration
- Add new real-time functionality



FUTUREINSIGHT



Lotus software

Lotus Sametime 7.5 is a major upgrade in real-time collaboration

- Sametime 7.5 Web Conferencing Enhancements
- Sametime 7.5 Instant Messaging Enhancements
- ■ Sametime 7.5 Real-Time Collaboration Gateway

FUTUREINSIGHT



Lotus software

New Multi-Protocol Gateway

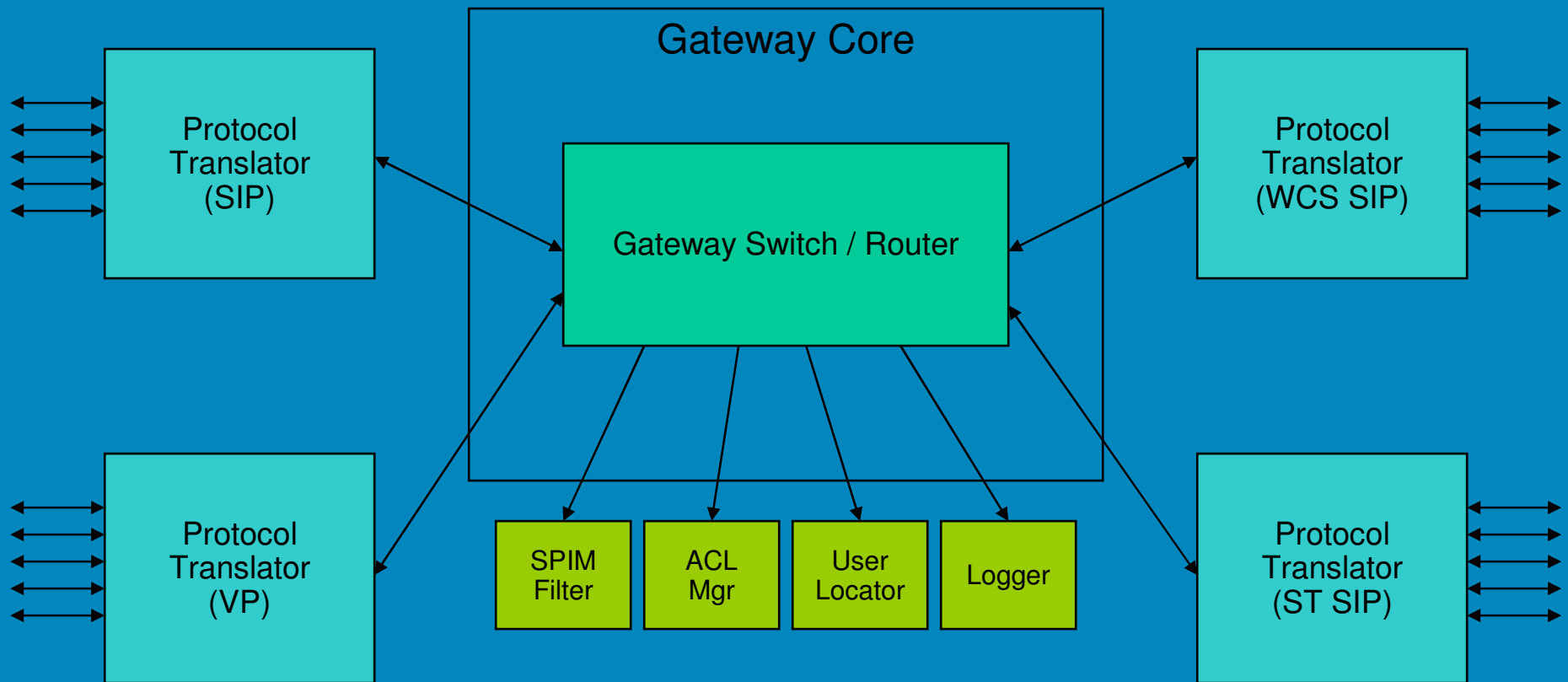
- Extensible platform, built on WebSphere, that allows real-time collaboration (RTC) communities (such as Sametime, Workplace, SIP, and public IM services) to share presence and interact with each other
- Management functionalities including policy enforcement and logging
- A plug-in technology allows IBM and third-party developers to enrich and customize the functionality

FUTUREINSIGHT



Lotus software

Gateway Architecture



FUTUREINSIGHT



Lotus software

Gateway for Inter-Domain Interoperability

- Released with ST 7.5 or shortly after
- Supported protocol translators:
 - Sametime (VP protocol)
 - WCS (SIP based)
 - Sametime SIP (SIP Gateway)
 - 100% IETF compliant SIP
- Main Features:
 - Presence and IM
 - Allow/disallow domains
 - Scalability
 - Failover
 - Interoperability with, and migration from, existing SIP Gateway

FUTUREINSIGHT



Lotus software